

Terrace I South

- Rhus lancea / Searcia lancea
- Ornithogalum longibracteatum or caud.
- pot : Bulbinella latifolia
- Viola (group)
- Scilla peruviana
- pot on wall : Polyxenia paucifolia
- Haemanthus coccineus (group)
- Myrtus communis
- Lilium candidum
- Arum pictum
- Fritillaria obliqua
- Arum sp.
- Bellevallia dubia
- Muscari armeniacum
- Narcissus sp.
- Aloe maculata (group)
- Phillyrea latifolia (multi stem)

Terrace I Middle

- Lavandula dentata
- Ferraria crispa
- Pelargonium
- Lantana (White)
- Carissa macrocarpa
- Tulipa
- Osteospermum ecklonis
- Salvia canariensis
- Felicia sp.
- Westringia fruticosa
- Centaurea cineraria
- Justicia californica
- Salvia lavandulifolia
- Perovskia atriplicifolia 'Blue Spire'
- Salvia sp.
- Anthyllis barba-jovis
- Cistus x skanbergii
- Coronilla valentina
- Freesia refracta
- Lavandula multifida
- Plectranthus caninus

Terrace I North

- Punica granatum
- Artemisia californica
- Iris unguicularis
- Iris germanica
- Russelia equisetiformis
- Centaurea cretica
- Verbena bonariensis
- Cistus sp.
- Osteospermum jucundum
- Sphaeralcea ambigua
- Barleria cristata
- Ceratostigma plumbaginoides
- Crassula multicava
- Centaurea heldreichii
- Salvia officinalis
- Oxalis purpurea
- Penstemon centranthifolius
- Acanthus arboreus
- Aloe sp.
- Pelargonium
- Parkinsonia aculeata
- Achillea millefolium
- Lavandula multifida
- Lavandula dentata
- Narcissus sp.
- Rosa sp.
- Teucrium flavum
- Anthyllis hermanniae
- Dicliptera sericea/Jacobina suberect
- Gazania rigens
- Citrus aurantium
- Ballota acetabulosa
- Acanthus mollis
- Rosmarinus officinalis 'Severn Sea'
- Phlomis fruticosa
- Cyperus sempervirens
- Euphorbia acanthothamnos
- Papaver/ Oxalis purpurea/

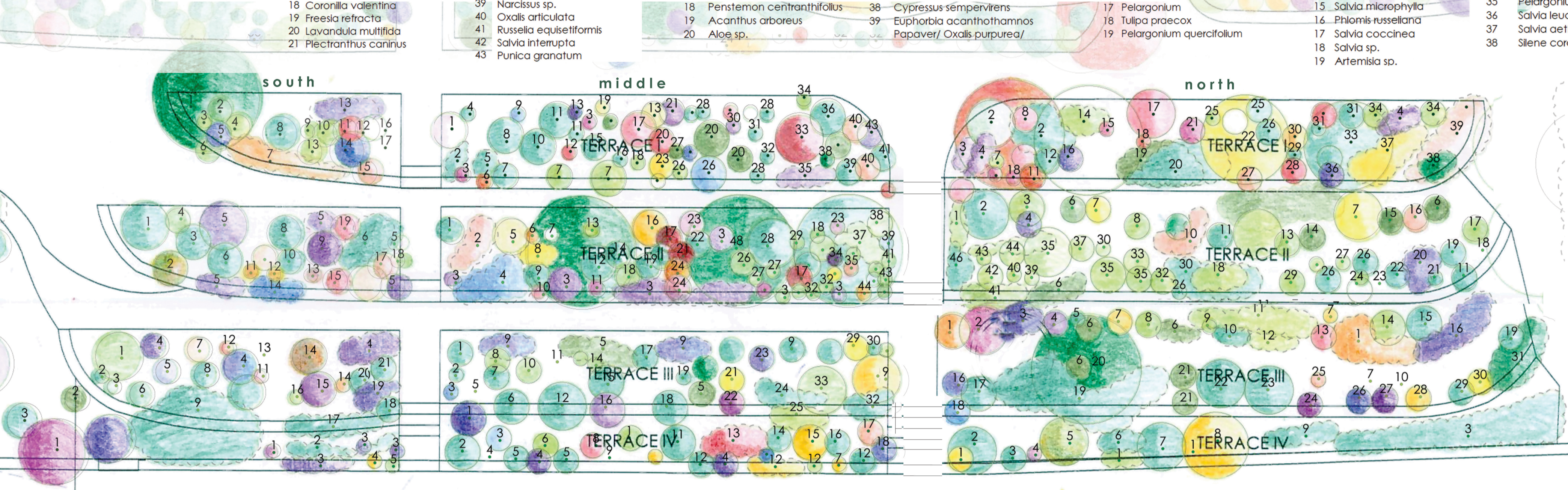
Terrace II South

- Duranta erecta 'Sapphire Shower'
- Pavonia praemorsa
- Freylinia lanceolata
- Mix Viola / Delphinium
- Iris unguicularis
- Lavandula dentata
- Caryopteris canadensis
- Teucrium flavum
- Salvia canariensis 'Candissima'
- Salvia somaliensis
- Mahonia aquifolium
- Senna artemisioides
- Pelargonium
- Rosmarinus officinalis 'Boule'
- Cistus x skanbergii
- Artemisia x 'Powis Castel'
- Pelargonium
- Tulipa praecox
- Pelargonium quercifolium

Terrace II Middle

- Rosmarinus sp.
- Pelargonium
- Iris unguicularis
- Salvia chamaedryoides
- Mahonia x media 'Charity'
- Erysimum wheeleri
- Correa
- Euryops linearis
- Goniolimon speciosum
- Pelargonium fragrans
- Cistus argenteus 'Peggy Sammons'
- Cistus ladanifer
- Salvia sp.
- Nandina domestica
- Salvia microphylla
- Phlomis russellana
- Salvia coccinea
- Salvia sp.
- Artemisia sp.

- Perovskia atriplicifolia 'Blue Spire'
- Melianthus major
- Phlomis chrysophylla
- Erigeron karvinskianus
- Euryops virgineus
- Cistus argenteus 'Peggy Sammons'
- Salvia (white flower)
- Agapanthus praecox
- Artemisia arborescens
- Salvia coccinea
- Pavonia hastata
- Salvia sp.
- Bulbine frutescens 'Hallmark'
- Iris pseudacorus
- Hyptis emoryi
- Pelargonium
- Salvia leucantha
- Salvia aethiops
- Silene coronaria
- Iris japonica
- Agapanthus praecox
- Satureja spicigera
- Salvia namaensis
- Micromeria helianthemifolia
- Chrysanthemoides incana
- Goniolimon
- Retama raetam
- Ulmus palvifolia
- Tipuana tipu



terrace gardens

0 0.5 1.5 3.5 8.5

project

SPAROZA GARDEN
OF THE MEDITERRANEAN GARDEN SOCIETY
GOULANDRIS NATURAL HISTORY MUSEUM

PROJECT: The existing landscape

LANDSCAPE ARCHITECTURE PROJECT

Design: EXISTING PLANTINGS

TERRACE GARDENS

PRINT PAPER	DESIGN NO	SCALE
A3+		1:100

CREDITS

The current design was created as a volunteer work by Horticultural-Landscape Architect and member of the MGS Dr. Lena Athanasiadou with the aid of landscape architecture students Ath. Alexandros Mpantogias & Antonia Psaropoulou based on the plant inventory created by MGS members Saily Razelou and Maria Ruffier - Monel and hand made plans created by Ms. Ganieller Gray, in 2001.

Reference: Gray, J. 2001. A Year of Sporoza: The Garden of the Parasitologists of the MGS near Athens, Greece. Report for the MGS Executive Committee in Acknowledgement of Financial Assistance by the Cash Trust

Sparoza, Peania, Athens OCTOBER 2020

Terrace II North

- Salvia sp.
- Coleonema album
- Origanum onites
- Salvia pratensis
- Antirrhinum siculum
- Aloe sp.
- Phlomis fruticosa
- Marrubium vulgare
- Schotia brachypetala
- Silene sp.
- Artemisia abrotanum
- Scabiosa/Lomelosia sp.
- Ruta graveolens
- Crococsmia
- Umbilicus rupestris
- Acanthus mollis
- Cyperus sempervirens
- Ruscus hypophyllum
- Iris germanica
- Rosa sp.
- Lavandula dentata
- Pistacia lentiscus
- Pelargonium sp.
- Pelargonium fragrans
- Phlomis sp.
- Viola sp.
- Origanum majorum

Terrace III South

- Acanthus hungaricus [syn. balcanicus]
- Malvaviscus arboreus
- Rosa 'Complicata'
- Iris unguicularis
- Ruscus hypophyllum
- Ruscus hypophyllum
- Abutilon x hybridum
- Phlomis fruticosa
- Teucrium fruticans 'Azureum'
- Bupleurum fruticosum
- Zantedeschia aethiopica
- Salvia africana-lutea
- Cercis siliquastrum
- Pelargonium
- Buddleja officinalis
- Euphorbia lathyris
- Osteospermum jucundum
- Yucca elephantipes
- Iris germanica
- Abutilon 'Louis Marignon'
- Phlomis italica

Terrace III Middle

- Artemisia 'Powis Castel'
- Spirea x vanhouttei
- Salvia chamaedryoides
- Morus alba
- Crococsmia sp.
- Nandina domestica
- Rosa 'Iceberg'
- Salvia canariensis 'Candissima'
- Iris unguicularis
- Salvia macrophylla
- Salvia hierosolymitana
- Acca sellowiana
- Cistus sp.
- Anthyllis barba-jovis
- Buddleja officinalis
- Oxalis purpurea
- Viburnum tinus
- Argyranthemum
- Euryops linearis
- Polygala myrtilifolia
- Phlomis bourgaei
- Aloe sp.
- Ballota acetabulosa
- Abelia x grandiflora
- Bulbine frutescens

Terrace III Middle

- Narcissus sp.
- Osteospermum jucundum
- Buxus balearica
- Teucrium fruticans 'Azureum'
- Jacaranda mimosifolia

Terrace III North

- Bulbine frutescens 'Hallmark'
- Loropetalum chinense
- Iris unguicularis
- Iris foetida
- Freesia laxa
- Haworthia fasciata
- Freesia refracta
- Clivia miniata
- Amaryllis belladonna
- Ophiopogon japonicus
- Zantedeschia aethiopica
- Asparagus aetiopicus
- Bergenia crassifolia
- Salvia sp.
- Cestrum fasciculatum 'Newellii'
- Iris germanica
- Anthyllis barba-jovis
- Rosmarinus officinalis 'Boule'
- Ruscus hypophyllum
- Pinus pinea
- Crococsmia
- Viburnum tinus
- Ruscus hypoglossum
- Tradescantia pallida
- Pelargonium
- Lavandula x heterophylla
- Salvia 'Alfred Chittering'
- Cneorum tricoccon

Terrace III North

- Lavatera arborea
- Artemisia arborescens
- Cyperus sempervirens
- Cerintho retorta/ Delphinium staphisagria Nigella, Consolida, Delphinium Antirrhinum siculum, Delphinium staphisagria

Terrace IV South

- Melianthus major
- Yucca elephantipes
- Iris germanica
- Phagnalon rupestre subsp. graceum
- Narcissus sp.

Terrace IV Middle

- Rosmarinus officinalis 'Boule'
- Eriocephalus africanus
- Rhamnus alaternus
- Iris germanica
- Lavandula dentata
- Phlomis fruticosa
- Phlomis fruticosa
- Narcissus sp.
- Cercis siliquastrum
- Cotyledon orbiculata
- Cistus x skanbergii
- Osteospermum jucundum
- Salvia microphylla
- Tulbaghia violacea
- Santolina rosmarinifolia
- Santolina chamaecyparissus
- Pelargonium
- Rosmarinus officinalis 'Severn sea'

Terrace IV North

- Narcissus sp.
- Styrax officinalis
- Cotyledon orbiculata
- Osteospermum ecklonis
- Euphorbia dendroides
- Crococsmia sp.
- Viburnum tinus
- Grevillea robusta
- Yucca elephantipes

