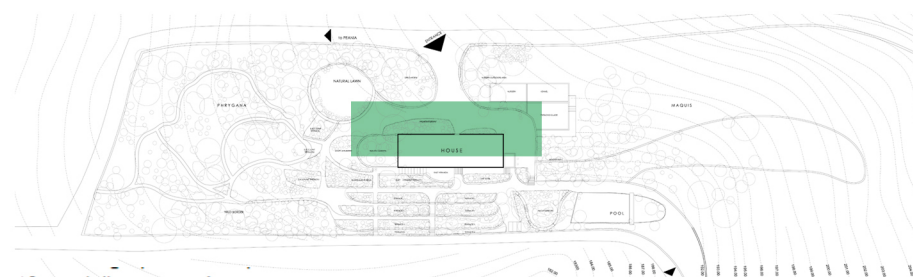
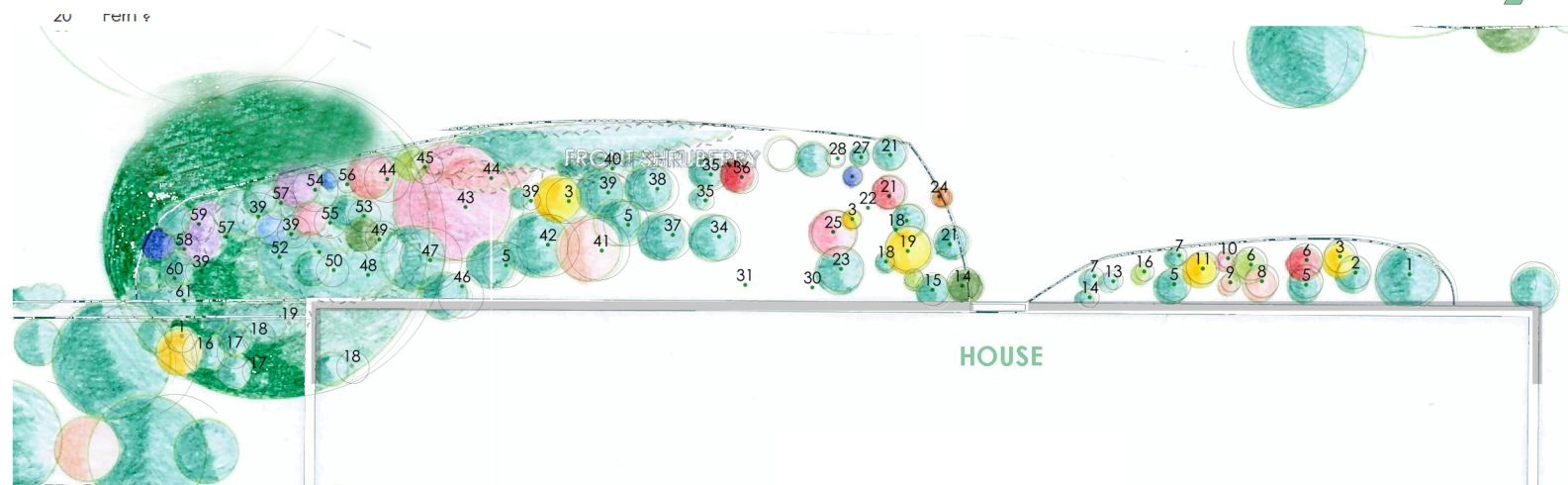


- |    |                                    |    |   |
|----|------------------------------------|----|---|
| 1  | <i>Duranta erecta</i>              | 21 | <i>Haworthia fasciata</i>                 |
| 2  | <i>Spirea x vanhouttei</i>         | 22 | <i>Pistacia lentiscus</i>                 |
| 3  | <i>Phlomis fruticosa</i>           | 23 | <i>Barleria cristata</i>                  |
| 4  | <i>Jasminum polyanthum</i>         | 24 | <i>Echinopsis</i> sp.                     |
| 5  | <i>Euonymus japonicus</i>          | 25 | <i>Rosa 'Duchesse de Brabant'</i>         |
| 6  | <i>Salvia microphylla</i>          | 26 | <i>Hardenbergia violacea</i>              |
| 7  | <i>Ceratostigma plumbaginoides</i> | 27 | <i>Nepeta faassenii 'Six Hills Giant'</i> |
| 8  | <i>Pelargonium</i>                 | 28 | <i>Helichrysum orientalis</i>             |
| 9  | <i>Portulacaria afra</i>           | 29 | <i>Dasyliirion</i>                        |
| 10 | <i>Oenothera speciosa</i>          | 30 | <i>Plumbago auriculata</i>                |
| 11 | <i>Phlomis fruticosa</i>           | 31 | <i>Dolichandra unguis-cati</i>            |
| 12 | <i>Salvia</i> sp.                  | 32 | <i>Melianthus major</i>                   |
| 12 | <i>Salvia</i> sp.                  | 33 | <i>Photinia</i>                           |
| 13 | <i>Plectranthus</i>                | 34 | <i>Rosa 'Iceberg'</i>                     |
| 14 | <i>Aloe ciliaris</i>               | 35 | <i>Lavandula dentata</i>                  |
| 15 | <i>Clematis flammula</i>           | 36 | <i>Pelargonium</i>                        |
| 16 | <i>Oxalis purpurea</i>             | 37 | <i>Rosa 'Nevada'</i>                      |
| 18 | <i>Lavandula multifida</i>         | 38 | <i>Teucrium fruticans 'Azureum'</i>       |
| 19 | <i>Thevetia peruviana</i>          | 39 | <i>Agapanthus praecox</i>                 |
| 20 | Fern ?                             | 40 | <i>Vinca major</i>                        |

# front shrubbery



- |    |  |    |                                       |
|----|--|----|---------------------------------------|
| 40 | <i>Vinca major</i>                       | 51 | <i>Haemanthus coccineus</i>           |
| 41 | <i>Rosa hugonis</i>                      | 52 | <i>Olea europea</i>                   |
| 42 | <i>Freylinia lanceolata</i>              | 53 | <i>Eriocephalus africanus</i>         |
| 43 | <i>Cercis siliquastrum</i>               | 54 | <i>Salvia fruticosa</i>               |
| 44 | <i>Bulbine fruticans</i>                 | 55 | <i>Cotyledon orbiculata Macrantha</i> |
| 45 | <i>Juniperus communis</i>                | 56 | <i>Iris germanica</i>                 |
|    | + <i>Tradescantia sillamontana</i> (pot) | 57 | <i>Tulbaghia violacea</i>             |
| 46 | <i>Bougainvillea</i> (white)             | 58 | <i>Muscari armeniacum</i>             |
| 47 | <i>Rosa</i> sp.                          | 59 | <i>Tradescantia pallida</i>           |
| 48 | <i>Pittosporum tobira</i>                | 60 | <i>Nerine</i>                         |
| 49 | <i>Bergenia crassifolia</i>              | 61 | <i>Bougainvillea</i> (purple)         |
| 50 | <i>Epiphyllum oxypetalum</i>             |    |                                       |

project		
<b>SPAROZA GARDEN</b>		
OF THE MEDITERRANEAN GARDEN SOCIETY		
GOULANDRIS NATURAL HISTORY MUSEUM		
PROJECT: The existing landscape		
LANDSCAPE ARCHITECTURE PROJECT		
Design: EXISTING PLANTINGS		
PRINT PAPER	DESIGN NO	SCALE
		<b>1:100</b>
CREDITS		
<p>The current design was created as a volunteer work by Horticulturist-Landscape Architect and member of the MGS Dr. Lena Athanasiadou with the aid of landscape architecture students AUTH Alexandros Mpantogias &amp; Antonia Psaropoulou based on the plant inventory created by MGS members Sally Razelou and Marie Ruffier - Monet and hand made plans created by Ms Gennifer Gay, in 2001.</p> <p>Reference: Gay J. 2001 A Year at Sparoza, The Garden of the Headquarters of the MGS near Athens, Greece. Report for the RHS Bursaries Committee in Acknowledgement of Financial Assistance by the Coke Trust</p>		
Sparoza, Peania, Athens		OCTOBER 2020