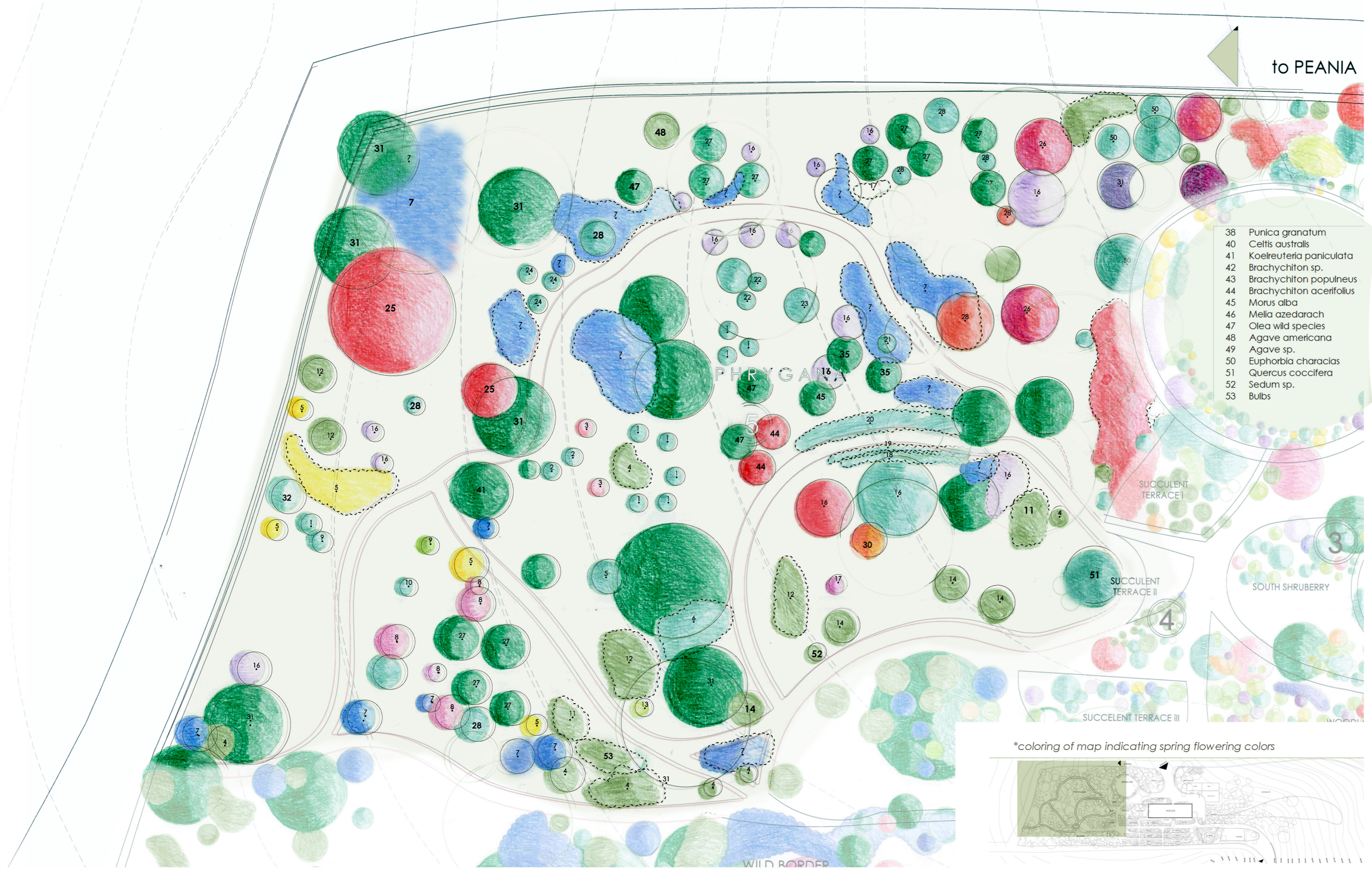


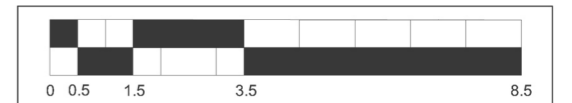
to PEANIA



- 38 Punica granatum
- 40 Celtis australis
- 41 Koeleruteria paniculata
- 42 Brachychiton sp.
- 43 Brachychiton populneus
- 44 Brachychiton acerifolius
- 45 Morus alba
- 46 Melia azedarach
- 47 Olea wild species
- 48 Agave americana
- 49 Agave sp.
- 50 Euphorbia characias
- 51 Quercus coccifera
- 52 Sedum sp.
- 53 Bulbs

- 1 Lavandula dentata
- 2 Leucophyllum frutescens
- 3 Limoniastrum monopetalum
- 4 Aloe sp.
- 5 Phlomis fruticosa
- 6 Cotyledon orbiculata
- 7 Iris germanica
- 8 Ptilostemon chamaepeuce
- 9 Euphorbia dendroides
- 10 Atriplex halimus
- 11 Opuntia ficus-indica
- 12 Agave americana
- 13 Glaucum flavum
- 14 Aloe hybrid
- 15 Austrocyllindropuntia subulata
- 16 Rosmarinus officinalis
- 17 Sarcopoterium spinosum
- 18 Cotyledon orbiculata
- 19 Aeonium arboreum 'Zwartkop'
- 20 Hibiscus syriacus
- 21 Anthyllis barba-jovis
- 22 Teucrium or Cistus
- 23 Rosa sp.
- 24 Spirea x vanhouttei
- 25 Pistacia lentiscus
- 26 Pistacia avara
- 27 Cupressus sempervirens
- 28 Yucca elephantipes
- 28 Pistacia atlantica
- 29 Artemisia arborescens
- 30 Fruthiostemnon gilliesie
- 31 Olea europea
- 32 Punica granatum
- 33 Koelerutia paniculata
- 34 Melia azedarach
- 35 Morus alba

phrygana



project
SPAROZA GARDEN
 OF THE MEDITERRANEAN GARDEN SOCIETY
 GOULANDRIS NATURAL HISTORY MUSEUM

PROJECT The existing landscape

LANDSCAPE ARCHITECTURE PROJECT
 DESIGN: EXISTING PLANTINGS

PTRYGANA

PAPER SIZE	DESIGN NO	SCALE
2,5 x A4		1:100

CREDITS
 The current design was created as a volunteer work by Horticulturalist-Landscape Architect and member of the MGS Dr. Lena Athanasiadou with the aid of landscape architecture students AUTH Alexandros Mpantogias & Antonia Psaropoulou based on the plant inventory created by MGS members Sally Razelou and Marie Ruffier - Monet and hand made plans created by Ms Jennifer Gay, in 2001.
 Reference: Gay J. 2001. A Year at Sparoza: The Garden of the Headquarters of the MGS near Athens, Greece. Report for the RHS Bursaries Committee in Acknowledgement of Financial Assistance by the Cole Trust

*coloring of map indicating spring flowering colors

